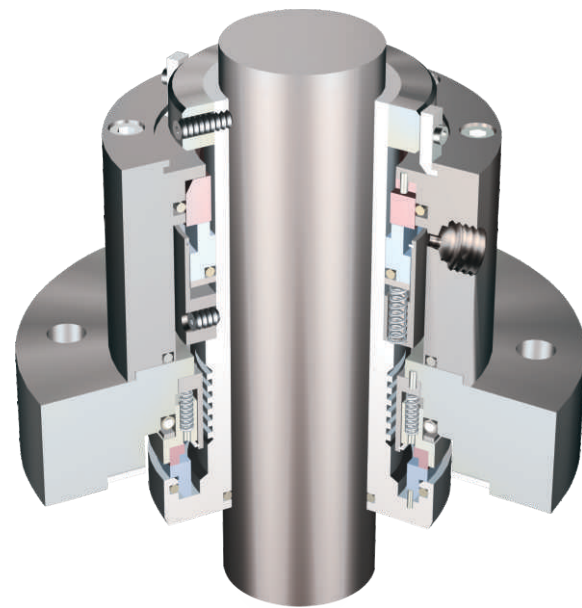


SCS/SSUV DOUBLE CARTRIDGE SEAL

- INBOARD SEAL DESIGNED TO HANDLE SLURRY
- CAN BE USED FOR HIGHER SPEEDS
- INTEGRAL PUMPING RING OPTION
- GUIDED SEALANT FLOW FOR BETTER HEAT DISSIPATION
- SPECIAL DESIGN FOR FLOATING SHAFTS WITH LINEAR EXPANSION
- AVAILABLE WITH / WITHOUT BEARING

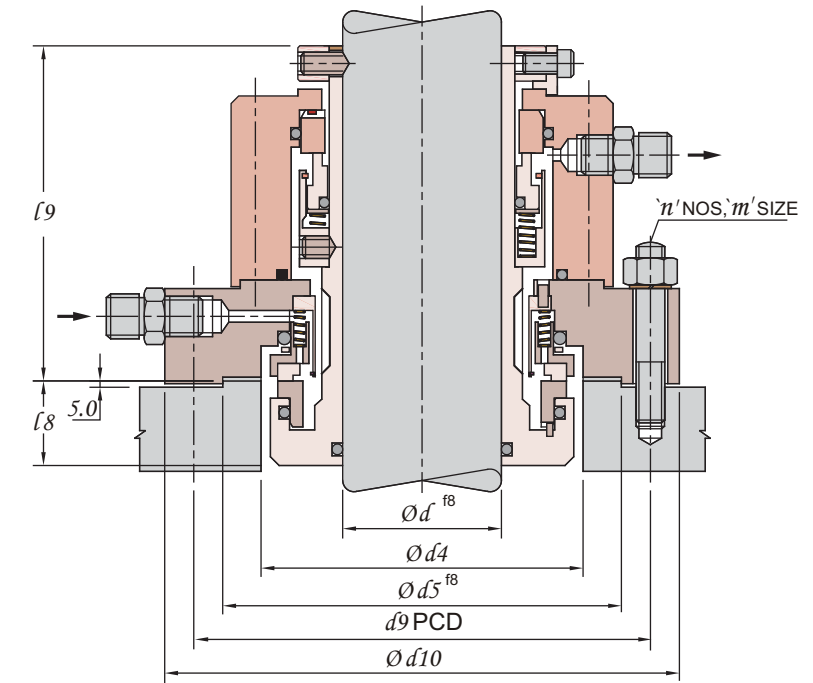


SEAL FOR BALL MILL

APPLICATIONS :

- FLOODED REACTORS
- TOP & BOTTOM ENTRY AGITATORS
- LUMP BREAKERS & CHOPPERS
- HORIZONTAL REACTORS & MIXERS
- GRINDING MILLS
- AGITATED FILTER DRYERS
- PC AUTOCLAVES

INSTALLATION DIMENSIONS



SIZE CODE	d	$d4$	$d5$	$d9$ PCD	$d10$	$l8$	$l9$	m	n
0250	25.0	80.0	110.0	135.0	155.0	38.5	105.0	M10	6
0300	30.0	80.0	110.0	135.0	155.0	38.5	105.0	M10	6
0350	35.0	90.0	115.0	140.0	160.0	40.0	105.0	M10	6
0400	40.0	90.0	115.0	140.0	160.0	40.0	105.0	M10	6
0450	45.0	100.0	125.0	150.0	170.0	41.0	112.0	M10	6
0500	50.0	105.0	140.0	175.0	200.0	41.0	115.0	M12	6
0550	55.0	105.0	140.0	175.0	200.0	41.0	115.0	M12	6
0600	60.0	105.0	140.0	175.0	200.0	41.0	115.0	M12	6
0700	70.0	135.0	170.0	200.0	225.0	47.5	120.0	M12	8
0750	75.0	135.0	170.0	200.0	225.0	47.5	120.0	M12	8
0800	80.0	155.0	190.0	230.0	262.0	61.0	125.0	M16	8
0850	85.0	155.0	190.0	230.0	262.0	61.0	125.0	M16	8

Dimensions for higher sizes available on request

LIMITING PARAMETERS

PRESSURE	TEMPERATURE	SPEED
FULL VACUUM TO 10 BAR	- 40° C TO 200° C*	2 m/sec

* For higher temperatures consult HI-FAB

MATERIALS

METAL PARTS	SEAL FACES	ELASTOMERS
	ROTARY	STATIONARY
SS316 SPECIAL MOC ON REQUEST	CARBON SIC	SIC, TC
		VITON, PTFE, FEP FKM, EPR, AFLAS

DESIGN VARIATIONS

